

CFISD COMPLIANCE COURSE (2020-21)



[Home](#) > [Professional Learning](#) > [Office of Professional Learning](#) > [Active Courses](#) > [CFISD COMPLIANCE COURSE \(2020-21\) 1](#) > [Module 5: Hazardous Materials](#)
 > [Module 5: Hazardous Materials](#) > [Edit](#) > [Expanded](#) > [Edit](#)

Module 5: Hazardous Materials

[Preview](#) [Edit](#) [Reports](#) [Grade essays](#)

[Collapsed](#) [Expanded](#)

[Import questions](#) | [Add a content page](#) | [Add a cluster](#) | [Add a question page here](#)

Introduction    



"I have asthma which is triggered by exposure to certain chemicals and allergens in the environment. I noticed that whenever I am cleaning using a certain product, my asthma gets worse. How do I know what chemicals I am being exposed to at work? Where do I go to find out?"

To protect yourself from exposure to hazardous materials in the workplace, read the following information on integrated pest management, asbestos exposure, and hazardous materials communication.

Federal and state law requires that all district employees be informed of the various hazardous materials they can be exposed to in the workplace, as well as, how they can protect themselves from unhealthful and unnecessary exposure to those materials.

Content

Content 1: Continue

Jump 1: Next page

[Import questions](#) | [Add a content page](#) | [Add a cluster](#) | [Add an end of branch](#) | [Add an end of cluster](#) | [Add a question page here](#)

Hazardous Materials Trainings    



In the subsequent pages, you will examine three topics intended to provide a better understanding of the hazardous materials you can be exposed to in the workplace, as well as, how you can protect yourself from unhealthful and unnecessary exposure to these materials.

Integrated Pest Management (IPM) - An effective and environmentally sensitive approach to pest management that relies on a combination of common sense practices.

Asbestos Containing Materials - The **Asbestos in Schools Rule** (AHERA) was developed to identify, assess and manage the asbestos containing building materials in schools.



HazCom - The **Texas Hazard Communication Act** (THCA) outlines procedures for protecting school personnel from chemical hazards.

Content

Content 1: Continue

Jump 1: Next page

[Import questions](#) | [Add a content page](#) | [Add a cluster](#) | [Add an end of branch](#) | [Add an end of cluster](#) | [Add a question page here](#)



Integrated Pest Management (IPM) is described as an effective and environmentally sensitive approach to pest management that relies on a combination of common sense practices.

Evolution of IPM

- 1991 legislative action
- 1995 implementation deadline
- 2001 Structural Pest Control Board (SPCB) philosophy



Regulatory Requirements Include the following:

An IPM policy in place, based upon:

- Strategies of best practices
- Pest identification and monitoring
- Non-chemical control using the least toxic chemical possible

An IPM Coordinator

- No license required
- Must complete approved training within 12 months of appointment

Training and licensing of personnel

- Must keep copy of licenses and training certificates on file
- Must use a commercial applicator
- Annual continuing education units are required
- 2 credit hours in the "General" category
- 1 credit hour per license category
- SPCB licensed as required by regulation
- Texas Department of Agriculture (TDA)
- Outdoor application only
- Test and license required

Content

Content 1: Continue

Jump 1: Next page

[Import questions](#) | [Add a content page](#) | [Add a cluster](#) | [Add an end of branch](#) | [Add an end of cluster](#) | [Add a question page here](#)

Question 1 ⌵ ⚙ 🔍 ✕



Think about it...

For which of the following is IPM an acronym?

Multichoice

Answer 1: Integrated Pest Management

Response 1 That is correct!

IPM is an acronym for Integrated Pest Management.

Score 1

Jump Next page

Answer 2 : Internal Pest Maintenance

Response 2 That is incorrect!

IPM is an acronym for Integrated Pest Management.

Score 0

Jump Next page

Answer 3 : Integrated Pest Monitoring

Response 3 That is incorrect!

IPM is an acronym for Integrated Pest Management.

Score 0

Jump Next page

[Import questions](#) | [Add a content page](#) | [Add a cluster](#) | [Add an end of branch](#) | [Add an end of cluster](#) | [Add a question page here](#)



The **Asbestos In Schools Rule (AHERA)** was developed to identify, assess and manage the asbestos containing building materials in schools.



Asbestos is:

- A naturally-occurring mineral fiber
- Added to a variety of building products to strengthen them and to provide heat insulation and fire resistance
- Has fibers that can be released into the air and inhaled into the lungs
- These fibers embedded in lung tissue over time may cause serious lung diseases including: asbestosis, lung cancer, or mesothelioma

Content

Content 1: Continue

Jump 1: Next page

[Import questions](#) | [Add a content page](#) | [Add a cluster](#) | [Add an end of branch](#) | [Add an end of cluster](#) | [Add a question page here](#)

Navigation

Administration



Became law in 1987

Requires public and private non-profit primary and secondary schools to inspect their buildings for asbestos-containing building materials (ACM)

Considered to be ACM if asbestos content is greater than or equal to 1% by volume



Schools must:

- Perform an original inspection and periodic re-inspections every 3 years for asbestos containing material
- Develop, maintain, and update an asbestos management plan and keep a copy at the school
- Provide yearly notification to parent, teacher, and employee organizations regarding the availability of the school's asbestos management plan and any asbestos abatement actions taken or planned in the school
- Designate a contact person to ensure the responsibilities of the local education agency are properly implemented
- Perform periodic surveillance of known or suspected asbestos-containing building material
- Provide custodial staff with asbestos awareness training

Content

Content 1: Continue

Jump 1: Next page

[Import questions](#) | [Add a content page](#) | [Add a cluster](#) | [Add an end of branch](#) | [Add an end of cluster](#) | [Add a question page here](#)



An Asbestos Management Plan is required to provide documentation of the recommended asbestos response actions, the location of asbestos within the school, and any action taken to repair or remove the material.



Must include:

- The name and address of each school building and whether the building has asbestos-containing building material, and what type of ACM
- Date of the original school inspection
- The plan for re-inspections
- A blueprint that clearly identifies the location of ACM that remains in the school
- A description of any response action or preventive measures taken to reduce asbestos exposure
- A copy of the analysis of any building material, and the name and address of any laboratory that sampled the material
- The name, address, and telephone number of the "designated person" to ensure the duties of the local education agency (LEA) are carried out
- A description of steps taken to inform workers, teachers, and students or their legal guardians about inspections, re-inspections, response actions, and periodic surveillance
- EPA Asbestos Line - **800-471-7127**



Click the link icon to go to the EPA Asbestos in Schools Website for more information.

Content

Content 1: Continue

Jump 1: Next page

[Import questions](#) | [Add a content page](#) | [Add a cluster](#) | [Add an end of branch](#) | [Add an end of cluster](#) | [Add a question page here](#)

Question 2



Think about it...

Which of the following should an Asbestos Management Plan include?

Multichoice

Answer 1: All of these choices

Response 1 That is correct!

The Asbestos Management Plan should include:

- School name and address
- Date of inspection
- Planned dates for re-inspections

Score 1

Jump Next page

Answer 2 : Date of inspection

Response 2 That is incorrect!

The Asbestos Management Plan should include:

- School name and address
- Date of inspection
- Planned dates for re-inspections

Score 0

Jump Next page

Answer 3 : Planned dates for re-inspections

Response 3 That is incorrect!

The Asbestos Management Plan should include:

- School name and address
- Date of inspection
- Planned dates for re-inspections

Score 0

Jump Next page

Answer 4 : School name and address

Response 4 That is incorrect!

The Asbestos Management Plan should include:

- School name and address
- Date of inspection
- Planned dates for re-inspections

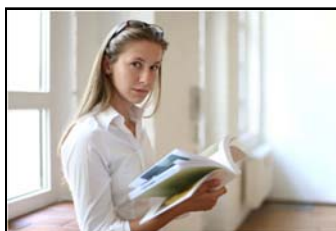
Score 0

Jump Next page

[Import questions](#) | [Add a content page](#) | [Add a cluster](#) | [Add an end of branch](#) | [Add an end of cluster](#) | [Add a question page here](#)

**Medical surveillance includes:**

- A physical to determine present condition of employee
- Past exposure and suitability for the use of negative pressure respirator
- Annual check-ups
- Pulmonary function test
- Chest x-rays as prescribed
- Records are kept for 30 years

**Notification Requirements:**

- Annual notification to employees and occupants

Additional notification of:

- periodic surveillance every 6 months
- re-inspection every 3 years
- response actions

Must keep records of everything, including but not limited to:

- Work orders
- Employee records
- Training
- Medical
- Waste disposal

Content

Content 1: Continue

Jump 1: Next page

[Import questions](#) | [Add a content page](#) | [Add a cluster](#) | [Add an end of branch](#) | [Add an end of cluster](#) | [Add a question page here](#)



The Texas Hazard Communication Act (THCA) outlines procedures for protecting school personnel from chemical hazards.

The Occupational Safety and Health Administration (OSHA) established the HazCom Standard (the "Right to Know" law) to protect the health and safety of employees.



- Covers all chemicals used in the workplace
- Requires proper documentation of all chemicals
- Employers must communicate those hazards
- Employers must protect employees

The Texas Hazard Communication Act (THCA)

- Applies to public employees, including school personnel
- Outlines procedures for protecting employees from chemical hazards to include
 - Hazard evaluation and chemical inventory
 - Warning labels on containers
 - Safety Data Sheets (SDSs)
 - Annual employee training

Examples of chemical products used in schools:

- Lubricants, such as WD-40
- Fuels, such as gasoline
- Cleaners
- Office supplies

Content

Content 1: Continue

Jump 1: Next page

[Import questions](#) | [Add a content page](#) | [Add a cluster](#) | [Add an end of branch](#) | [Add an end of cluster](#) | [Add a question page here](#)

Question 3



Think about it...

True or False. OSHA's HazCom Right to Know law states that employers are required to protect the health and safety of employees.

True/false

Answer 1: True

Response 1 That is correct!

The Occupational Safety and Health Administration (OSHA) established the HazCom Standard (the "Right to Know" law) to protect the health and safety of employees.

- Covers all chemicals used in the workplace
- Requires proper documentation of all chemicals
- Employers must communicate those hazards
- Employers must protect employees

Score 1

Jump Next page

Answer 2 : False

Response 2 That is incorrect!

The Occupational Safety and Health Administration (OSHA) established the HazCom Standard (the "Right to Know" law) to protect the health and safety of employees.

- Covers all chemicals used in the workplace
- Requires proper documentation of all chemicals
- Employers must communicate those hazards
- Employers must protect employees

Score 0

Jump Next page

[Import questions](#) | [Add a content page](#) | [Add a cluster](#) | [Add an end of branch](#) | [Add an end of cluster](#) | [Add a question page here](#)



Think about it...

True or False. The Texas Hazard Communication Act (THCA) requires employers to prevent the use of WD-40 in schools.

True/false

Answer 1: False

Response 1 That is correct!

WD-40 is an example of a chemical product used in schools. The Texas Hazard Communication Act (THCA) outlines procedures for protecting employees from chemical hazards to include Hazard evaluation and chemical inventory; warning labels on containers; Material Safety Data Sheets (MSDSs), and annual employee training.

Score 1

Jump Next page

Answer 2 : True

Response 2 That is incorrect!

WD-40 is an example of a chemical product used in schools. The Texas Hazard Communication Act (THCA) outlines procedures for protecting employees from chemical hazards to include Hazard evaluation and chemical inventory; warning labels on containers; Material Safety Data Sheets (MSDSs), and annual employee training.

Score 0

Jump Next page

[Import questions](#) | [Add a content page](#) | [Add a cluster](#) | [Add an end of branch](#) | [Add an end of cluster](#) | [Add a question page here](#)



Employers must document chemicals in the workplace by:

- Compiling a list of chemicals and keeping the list in a central location
- Evaluating chemical hazards
- Maintaining a Safety Data Sheet (SDS) for each chemical used
- Logging new chemicals as they are introduced into the workplace



Chemicals are considered hazardous when they present a:

- Physical hazard (i.e. combustible liquid, a compressed gas, explosive, flammable)
- Health hazard (i.e. create acute or chronic health effects)

Hazardous chemicals can enter the body by:

- Inhalation
- Absorption
- Ingestion
- Injection

Content

Content 1: Continue

Jump 1: Next page

[Import questions](#) | [Add a content page](#) | [Add a cluster](#) | [Add an end of branch](#) | [Add an end of cluster](#) | [Add a question page here](#)



A Safety Data Sheet (SDS) is:

- As of June 2016 will be called Safety Data Sheets (SDS)
- required for each hazardous chemical product
- provided by chemical manufacturers and importers
- contains all the critical information you need about how to use, transport, and store chemicals in order to protect yourself, as well as what to do in case of emergencies and overexposure

Information on an SDS includes:

- Chemical's name(s)
- Manufacturer information
- List of the chemical's ingredients
- Permissible Exposure Limits (PEL) or Threshold Limit Value (TLV)
- What conditions or other substances will cause the chemical to catch fire, explode, melt, or turn into dangerous gases
- How it usually looks and smells
- How to put out a fire involving the chemical
- What to do if it spills or leaks
- How to prevent dangerous exposure
- Health hazards such as skin irritant or cancer-causing
- Symptoms of overexposure and what to do if you are overexposed
- When the SDS was prepared
- All Chemicals used in CFISD
- CFISD.net>Staff>Employee Only Links>Inside.CFISD.net>Employee New>MSDS Online Binder

Content

Content 1: Continue

Jump 1: Next page

[Import questions](#) | [Add a content page](#) | [Add a cluster](#) | [Add an end of branch](#) | [Add an end of cluster](#) | [Add a question page here](#)

Question 5 ⚙️ 🔍 ✖️



Think about it...

True or False. A Safety Data Sheet (SDS) should be made available, upon request, to any employee for any and all chemicals on the campus.

True/false

Answer 1: True

Response 1 That is correct!

A Safety Data Sheet (SDS) is required for each hazardous chemical product provided by chemical manufacturers and importers. A SDS contains all the critical information you need about how to use, transport, and store chemicals in order to protect yourself, as well as what to do in case of emergencies and overexposure.

Score 1**Jump** Next page**Answer 2 :** False**Response 2** That is incorrect!

A Safety Data Sheet (SDS) is required for each hazardous chemical product provided by chemical manufacturers and importers. A SDS contains all the critical information you need about how to use, transport, and store chemicals in order to protect yourself, as well as what to do in case of emergencies and overexposure.

Score 0**Jump** Next page

[Import questions](#) | [Add a content page](#) | [Add a cluster](#) | [Add an end of branch](#) | [Add an end of cluster](#) | [Add a question page here](#)



Have any questions about hazardous materials? Click the link to email your CFISD contact person.

Content

Content 1: Continue**Jump 1:** Next page

[Import questions](#) | [Add a content page](#) | [Add a cluster](#) | [Add an end of branch](#) | [Add an end of cluster](#) | [Add a question page here](#)