



VISION 2020
long-range plan



2014 BOND UPDATE

The CFISD Board of Trustees voted to call for a bond election to be held on May 10. The following categories of projects are included in the districtwide bond package recommended by the community-led Long-Range Planning Committee:

- ▶ Technology
- ▶ Security & Safety
- ▶ Transportation
- ▶ Student Growth
- ▶ Campuses & Support Facilities Improvements

Bond 2014 Total\$1.2B

For more Bond 2014 information, please go to www.cfisd.net/bond2014

TECHNOLOGY

- Infrastructure upgrades;
- Improved high-speed wireless and Internet access; and
- Instructional technology upgrades

Technology Update

Projects

- Installation of enterprise state-of-the-art, high-speed wireless access infrastructure that includes up to three wireless device connections, Bring Your Own Technology (BYOT) program, secured visitor access and outdoor wireless coverage.
- Installation of high-speed network electronic switching gear that provides secured, high-performance communications from the end-user devices in schools, service centers, hubs, data centers and Internet connections.
- Upgrading network cabling, fiber optic connectivity, power, and network closets in schools, service centers, hub connections and data centers that expand access for faster connectivity and network reliability and installation of adequate air conditioning in elementary and secondary schools.

Technology Update *continued ...*

Projects

- Upgrading data center infrastructure to make more efficient use of server resources and improve server availability and system sustainability.
- Upgrading technology and telephone system to provide state-of-the-art equipment for staff and teachers by replacing telephone system with voice-over Internet protocol, classroom computers and all district network printers and servers.
- Installing technology infrastructure (phone system & administrative staff technology, wireless access points, network infrastructure) in **new** schools – two high schools, two middle schools and five elementary schools.

Check us out @ www.cfisd-technologyservices.net/2014-bond.html



Technology Leadership and Communication

Vision: BE the District that TRANSFORMS education
Mission: LEAD in Providing World-Class Quality K-12 Systems
Values: Efficient - Accessible - Systematic - Highly Skilled - Student Focused - Service Oriented - Leadership



Home Teams Daily Status **2014 Bond** Performance Excellence Resources more...

VISION 2020 BOND • 2014

2014 Bond Referendum

Technology Infrastructure

 <p>Wireless Bond 1</p>	 <p>Network Bond 2</p>	 <p>Connectivity Bond 3</p>	 <p>Data Centers Bond 4</p>	 <p>Staff Tech Bond 5</p>	 <p>Construction Bond 6</p>	 <p>INSTRUCTIONAL TECHNOLOGY</p>
Enterprise High Speed Wireless	Network Infrastructure	Cabling, Power, and Air Conditioning	Data Center Upgrades	Administrative Staff Technology	Technology for New Schools	Instructional Technology

Instructional Technology Update – Current Bond Rollout

	Device	Number of Classrooms Installed	Curriculum Areas
Upgrade Standard Classroom Technology	Promethean Panels	1940	ELAR, LOTE, NAC, ESL
	Lightspeed Sound Enhancement	1219	ELAR, LOTE, NAC, ESL
	HoverCams	6340	ALL
	Chromebooks and Laptops	1465	ELAR, LOTE, NAC, ESL
	Teacher Computers	190	ELAR, LOTE, NAC, ESL

Instructional Technology Update – Current Bond Rollout

	Device	Number of COWs Delivered	Curriculum Areas
Upgrade Student Mobile Technology	Computers on Wheels (COWs) (20 devices per COW)	230	ELAR, LOTE, ELEMENTARY ALL

Instructional Technology Update – Current Bond Rollout

	Device	Number of Classrooms Installed	Curriculum Areas
Upgrade High School Labs – CTE, USH, etc.	Desktops/Laptops	In Planning	
Upgrade Library Technologies		In Planning	
Upgrade Special Campuses – ALC-E, ALC-W, ABC, Carlton and Windfern	Promethean Panels	61	ELAR, LOTE, ESL
	Lightspeed Sound Enhancement Systems	In Planning	All Curriculum Areas
	Hovercams	114	ALL Curriculum Areas
	Chromebooks or Laptops	In Planning	ELAR, LOTE, ESL
	Teacher Computers	In Planning	ELAR, LOTE, ESL

Instructional Technology Update – Current Bond Rollout

	Device	Campus	Number of Classrooms Installed	Progress Status	Curriculum Areas
Install Instructional Technology in New Campuses (Woodard and Cypress-Park)	Promethean Panel	Woodard Cypress-Park	58 65	Complete Year 1	All All
	Lightspeed Sound Enhancement System	Woodard Cypress-Park	58 175	Complete All	All All
	HoverCams – Document Camera	Woodard Cypress-Park	58 65	Complete Year 1	All All
	Chromebooks and Laptops	Woodard Cypress-Park	406 644	Complete Year 1	All All
	Teacher Laptops	Woodard Cypress-Park	58 65	Complete Year 1	All

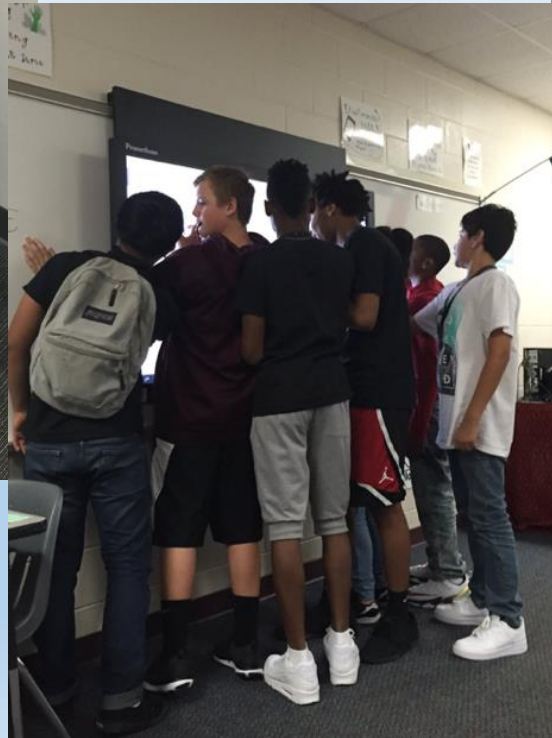
Instructional Technology Update – Current Bond Rollout

	Device	Number of Devices Installed	Curriculum Areas
Upgrade Other Technology-ISC Labs	Promethean Panel	2	All
	HoverCams – Document Camera	4	All
	Lightspeed Sound Enhancement System	1	All
	Teacher Laptops	3	All
	Chromebooks and Laptops	40	All

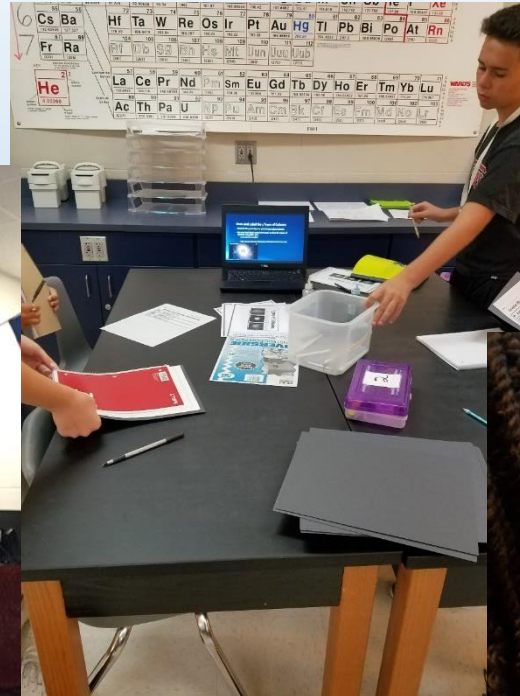
Classroom Technology in Action!



Promethean Panels in Social Studies



Lightspeed Flexcat Pod



Chromebooks in Math



Laptops in Biology

COWs (Computers on Wheels)



Chromebook COWs supplement classroom instruction.



Windows laptops used to complete class assignments.

New School Technology

Promethean panels and Chromebooks enhance classroom instruction!



Promethean panels utilized in Culinary Class!



SAFETY & SECURITY

- Secured front entries with buzzer door releases at campuses;
- Additional inside/outside security cameras;
- Additional “lockdown” panic buttons;
- Additional card reader access points;
- Reinforced/bullet-resistant glass at entries and exit windows; and
- Improved emergency communications

Districtwide Facilities Upgrades

- ✓ • Intrusion detection panels - **COMPLETE**
- ✓ • Video camera/buzzer at entry – **COMPLETE**
- ✓ • Card reader access points - **COMPLETE**
- Security vestibules – DESIGN
- Closed circuit TV upgrades – DESIGN
- Security camera DVR replacement – DESIGN
- New communications towers – CONSTRUCTION

TRANSPORTATION

- Additional buses for restoration of transportation services;
- Additional buses to accommodate student growth; and
- Transportation center to accommodate growth in southwestern portion of district

Transportation

- SW Transportation Center – CONSTRUCTION (January 2017)
- ✓ • 54 Buses to reinstate two-mile service - **COMPLETE**
- 65 Buses for growth – IN PROGRESS
- 317 Buses for fifteen-year replacement – IN PROGRESS
- ✓ • Video surveillance for buses – **COMPLETE**
- ✓ • GPS systems for buses – **COMPLETE**

New Westgreen Transportation Center



STUDENT GROWTH

- Three elementary schools, one middle school;
- Land purchase for future school sites;
- Natatorium (Pridgeon Stadium);
- Ag-Science project barn; and
- Food service distribution warehouse

New Facilities Update

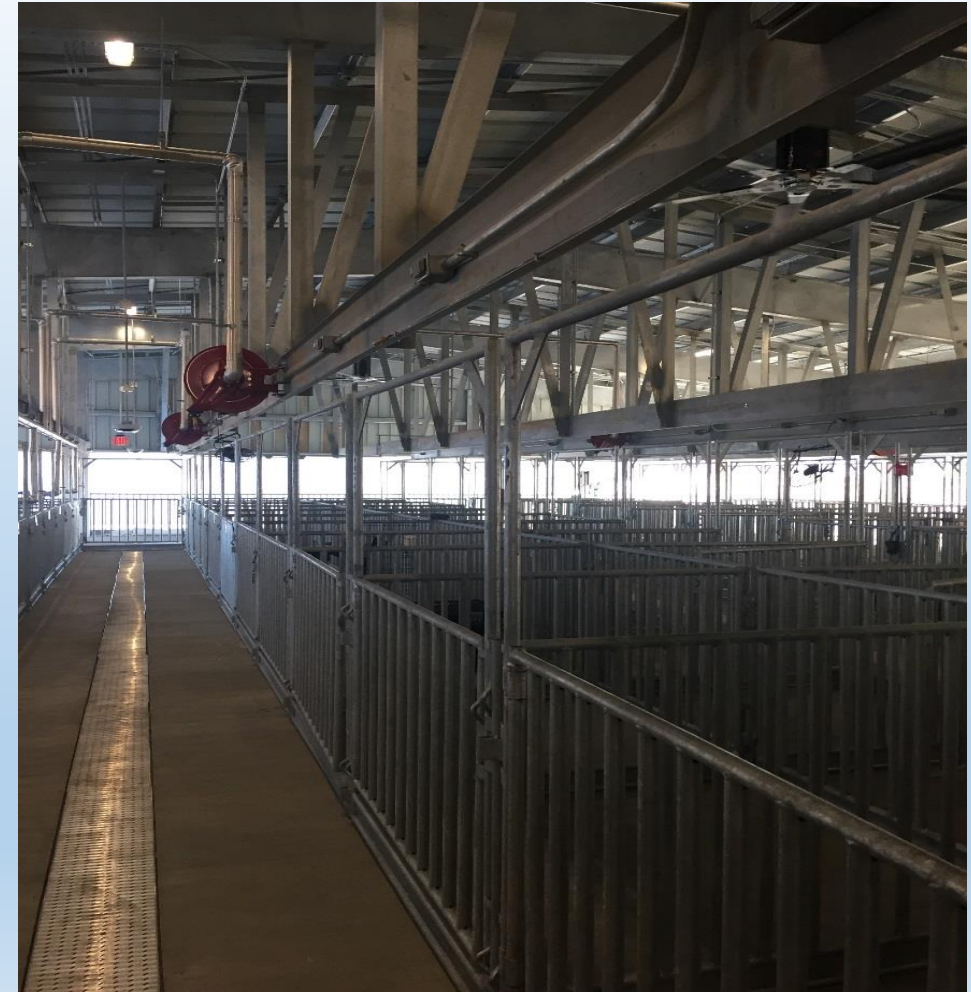
FACILITY	OPENING DATE
Elementary No. 57	August 2021
Elementary No. 58	August 2023
Middle School No. 19	August 2020
Matzke ES Replacement	August 2017
Natatorium	February 2017
Westgreen Agricultural Center	September 2016
Satellite Cold Food Storage	December 2016
School Sites	Ongoing

Current land acquisition: Multi-campus site south of Hwy. 290 for a future high school, middle school & elementary school.

New Matzke Elementary School



Westgreen Agriculture Center



Satellite Cold Food Warehouse



BEFORE



CURRENTLY IN CONSTRUCTION

Natatorium



**Currently in
construction**

Natatorium



**Currently in
construction**

Natatorium



Upon completion

CAMPUSES & SUPPORT FACILITIES IMPROVEMENTS

- Major Renovations and Additions
- Program Enhancements
- Asset Protection

Major Renovations/Additions

ITEM	STATUS	% COMPLETE
Adam Elementary School	Construction	22%
Bane Elementary School	Construction	9%
Watkins Middle School	Construction	20%
Matzke ES Repurpose *Upon completion of Matzke replacement, the district will start construction on Matzke ES repurpose to address growth issues	Design	

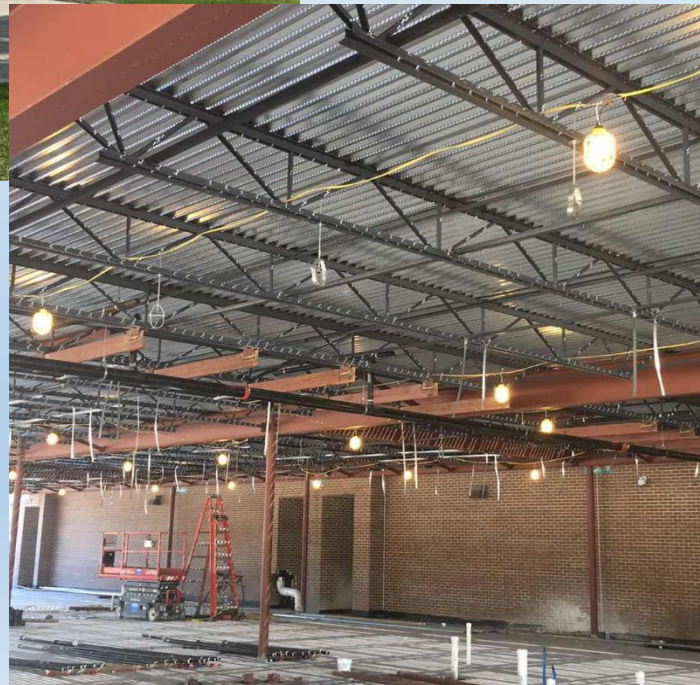
Adam Elementary School



Adam Elementary School



Adam Elementary School



Bane Elementary School



Bane Elementary School



BEFORE



CONSTRUCTION PHASE

Watkins Middle School



Watkins Middle School



Francone Elementary School



Program Enhancements

ITEM	STATUS
Pridgeon Stadium renovations to Include new ADA accessible press box, band access, parking lot upgrades and ADA accessibility upgrades	COMPLETE
Running tracks at middle schools	Construction at Dean / Watkins – August 2017 *Remaining MS tracks to be completed with campus renovations
Dance floor replacements at high schools	Design at Cy-Falls / Cy-Springs – August 2018 *Remaining dance floors to be completed with campus renovations
Culinary arts program at Bridgeland HS	Construction – August 2017
Food lab renovations at high schools	Design at Cy-Falls / Cy-Springs – August 2018 *Remaining food labs to be completed with campus renovations
New orchestra shells at high schools	Purchasing – August 2017

Pridgeon Stadium



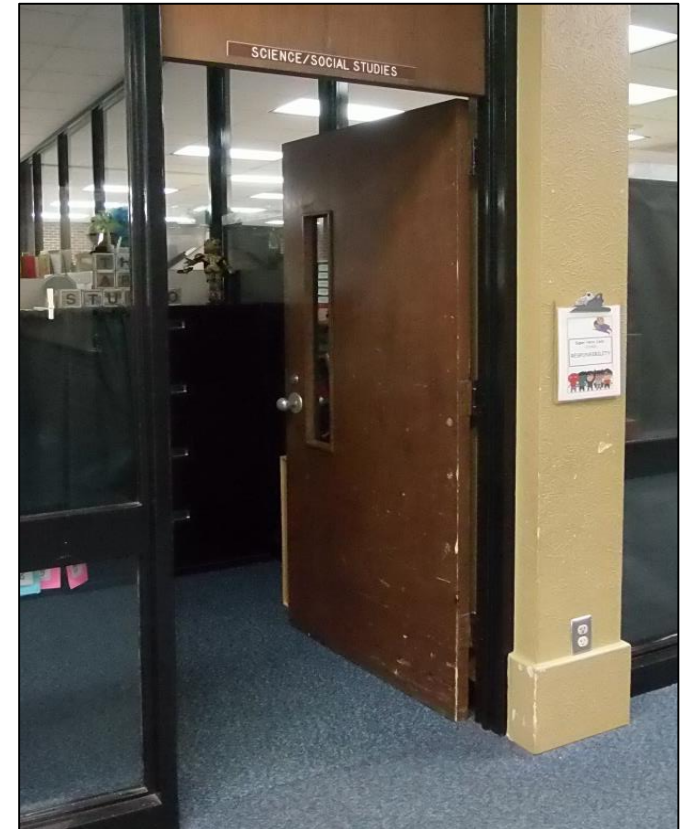
Pridgeon Stadium



Asset Protection



Facilities renovations: Asset protection and program enhancement.



PHASE 1 - 2014



CAMPUS	DESIGN START DATE	SUBSTANTIAL COMPLETION DATE
High School 12	September 2014	August 2017
New Natatorium	September 2014	January 2017
School Site Purchases	November 2014	COMPLETE
Renovations to Pridgeon Stadium	September 2014	July 2016
Transportation (Buses, GPS, DVR's)	November 2014	COMPLETE
Security - Communications Towers	November 2014	August 2017
Security - Card Readers Access at Elementary Schools	November 2014	COMPLETE
Security - Card Readers Access at Middle Schools	November 2014	COMPLETE
Security - Card Readers Access at High Schools	November 2014	COMPLETE
Security - Front Door Video Camera and Buzzer	November 2014	COMPLETE
Security - Ben Bradley Security/Police Center Camera Upgrade	November 2014	COMPLETE
Technology - Networking Infrastructure	November 2014	COMPLETE
Technology - Instructional Technology	November 2014	COMPLETE
Elementary School No. 54	November 2014	COMPLETE
Technology - IDF/MDF Room HVAC Improvements – HS & MS	November 2014	COMPLETE
<i>*Phasing Schedule and Project Scope is subject to change based upon critical replacements changes and construction market conditions</i>		

PHASE 2 - 2015

CAMPUS	DESIGN START DATE	SUBSTANTIAL COMPLETION DATE
Adam / Francone ES Major Renovations/Additions	August 2015	August 2017
Bane ES / Dean MS Major Renovations/Additions	August 2015	August 2017
Watkins / Lieder Middle Major Renovations/Additions	August 2015	August 2017
Jowell ES Renovations	August 2015	August 2017
Elementary School No. 55 (Part of HS 12 Package)	November 2014	June 2017
Elementary School No. 56	February 2015	June 2017
New Matzke Replacement School	February 2015	June 2017
New Transportation Center	February 2015	January 2017
Satellite Cold Food Warehouse	April 2015	December 2016
New Ag Center	April 2015	COMPLETE
School Site Purchases	November 2015	November 2016
Transportation (Buses)	November 2015	COMPLETE
Security- Provide 60 Emergency Call Boxes	November 2015	December 2017
Technology- Network Infrastructure	November 2015	November 2016
Technology- Instructional Technology		
High School No. 11	November 2015	COMPLETE
Elementary No. 54	November 2015	COMPLETE
Upgrade Standard Classroom Technology	November 2015	November 2016
Upgrade Student Mobile Technology	November 2015	November 2016
Upgrade High School Labs	November 2015	November 2016
Upgrade Library Technology	November 2015	November 2016
Upgrade Special Campuses	November 2015	November 2016
Upgrade other Technology - ISC Labs	November 2015	November 2016
<i>*Phasing Schedule and Project Scope is subject to change based upon critical replacements changes and construction market conditions</i>		

PHASE 3 - 2016



CAMPUS	DESIGN START DATE	SUBSTANTIAL COMPLETION DATE
Existing Matzke ES Repurpose & Renovation	November 2016	August 2018
Cypress Falls HS Renovations	February 2016	August 2018
Cypress Springs HS Renovations	February 2016	August 2018
Holmsley ES Renovations	February 2016	August 2017
Willbern ES Renovations	February 2016	August 2017
Emmott/Bang ES Renovations	November 2016	August 2018
Hamilton ES Renovations	November 2016	August 2018
Goodson MS Renovations	November 2016	August 2018
Metcalfe/ Reed ES Renovations	November 2016	August 2018
Berry Center Renovations	November 2016	August 2017
Transportation (Buses)	November 2016	August 2017
PA / Fire Alarm Systems (Select Campuses)	November 2016	August 2017
Security - Install Lock Down Panic Buttons	February 2016	August 2017
Technology- Instructional Technology		
High School No. 12	November 2016	August 2017
Elementary School No. 55	November 2016	August 2017
Elementary School No. 56	November 2016	August 2017
Upgrade Standard Classroom Technology	November 2016	November 2017
Upgrade Student Mobile Technology	November 2016	November 2017
Upgrade High School Labs	November 2016	November 2017
Upgrade Library Technology	November 2016	November 2017
Upgrade Special Campuses	November 2016	November 2017
Upgrade other Technology - ISC Labs	November 2016	November 2017
<i>*Phasing Schedule and Project Scope is subject to change based upon critical replacements changes and construction market conditions</i>		

PHASE 3 - 2016



CAMPUS	DESIGN START DATE	SUBSTANTIAL COMPLETION DATE
Existing Matzke ES Repurpose & Renovation	November 2016	August 2018
Cypress Falls HS Renovations	February 2016	August 2018
Cypress Springs HS Renovations	February 2016	August 2018
Holmsley ES Renovations	February 2016	August 2017
Willbern ES Renovations	February 2016	August 2017
Emmott/Bang ES Renovations	November 2016	August 2018
Hamilton ES Renovations	November 2016	August 2018
Goodson MS Renovations	November 2016	August 2018
Metcalf/ Reed ES Renovations	November 2016	August 2018
Berry Center Renovations	November 2016	August 2017
Transportation (Buses)	November 2016	August 2017
PA / Fire Alarm Systems (Select Campuses)	November 2016	August 2017
Security - Install Lock Down Panic Buttons	February 2016	August 2017
Technology- Instructional Technology		
High School No. 12	November 2016	August 2017
Elementary School No. 55	November 2016	August 2017
Elementary School No. 56	November 2016	August 2017
Upgrade Standard Classroom Technology	November 2016	November 2017
Upgrade Student Mobile Technology	November 2016	November 2017
Upgrade High School Labs	November 2016	November 2017
Upgrade Library Technology	November 2016	November 2017
Upgrade Special Campuses	November 2016	November 2017
Upgrade other Technology - ISC Labs	November 2016	November 2017
<i>*Phasing Schedule and Project Scope is subject to change based upon critical replacements changes and construction market conditions</i>		

PHASE 4 - 2017



CAMPUS	DESIGN START DATE	SUBSTANTIAL COMPLETION DATE
Middle School 19	January 2017	June 2020
Thornton MS Renovations	January 2017	August 2020
Cook MS Renovations	January 2017	August 2020
Langham Creek HS Renovations	January 2017	August 2020
Truitt MS Renovations	January 2017	August 2020
Hancock ES Renovations	January 2017	August 2018
Ault ES Renovations	January 2017	August 2019
Owens ES Renovations	January 2017	August 2019
Transportation (Buses)	November 2017	August 2018
Technology- Instructional Technology		
Upgrade Standard Classroom Technology	November 2017	November 2018
Upgrade Student Mobile Technology	November 2017	November 2018
Upgrade High School Labs	November 2017	November 2018
Upgrade Library Technology	November 2017	November 2018
Upgrade Special Campuses	November 2017	November 2018
Upgrade other Technology - ISC Labs	November 2017	November 2018
<i>*Phasing Schedule and Project Scope is subject to change based upon critical replacement changes and construction market conditions</i>		

PHASE 5 - 2018



CAMPUS	DESIGN START DATE	SUBSTANTIAL COMPLETION DATE
--------	-------------------	-----------------------------

Transportation Center Renovations	December 2017	August 2019
Cy Ridge HS Renovations & Culinary Arts Lab Addition	December 2017	August 2019
Jersey Village HS Renovations	December 2017	August 2019
Cy Creek HS Renovations	August 2018	August 2020
Walker/Moore ES Renovations	August 2018	August 2020
Labay MS Renovations	August 2018	August 2020
Cy-Fair HS / Cy Fair Annex Renovations	September 2018	August 2021
Hamilton MS Renovations	September 2018	August 2021
Cy Woods HS/Cy Lakes HS/Cy Ranch HS/Carlton Center Renovations	October 2018	August 2019
Food Production Center and Freezer Renovations	October 2018	August 2019
ISC / ISC West Renovations	October 2018	August 2019
Aragon / Spillane MS Renovations	October 2018	August 2019
ELC #1/ELC #2 Renovations	October 2018	August 2019
Windfern Annex / Windfern HS Renovations	October 2018	August 2019
Anthony MS Renovations	October 2018	August 2019
Transportation (Buses)	November 2018	November 2019
<i>*Phasing Schedule and Project Scope is subject to change based upon critical replacement changes and construction market conditions</i>		

PHASE 6 - 2019

CAMPUS	DESIGN START DATE	SUBSTANTIAL COMPLETION DATE
Elementary School No. 57	February 2019	June 2021
Elementary School No. 58	February 2021	June 2023
Fiest ES Renovations	August 2019	August 2021
Millsap/Wilson ES Renovations	August 2019	August 2021
Copeland ES Renovations	August 2019	August 2021
Hairgrove/Sheridan ES Renovations	August 2019	August 2021
Lowery ES Renovations	August 2019	August 2021
Gleason/Holbrook ES Renovations	October 2019	August 2020
Farney/Sampson/Lee/Kirk ES Renovations	October 2019	August 2020
Horne/Post ES Renovations	October 2019	August 2020
Keith/McFee/Pope/Rennell ES Renovations	October 2019	August 2020
Robinson/Robison/Swenke/Tipps/Warner ES Renovations	October 2019	August 2020
Support Facilities Upgrades 1- Ag Centers/Charlotte Burns Science Resource Center/Exhibit Center	October 2019	August 2020
Support Facilities Upgrades 2- ALC/ABC & ALC West & Ropes Pavilions	October 2019	August 2020
Support Facilities Upgrades 3 - M&O & Falcon Annex	October 2019	August 2020
Frazier ES Renovations	August 2019	August 2020
Black/Danish/Duryea ES Renovations	October 2019	August 2020
Emery/Lamkin/Hemmenway/Postma ES Renovations	October 2019	August 2020
Andre/Birkes/Yeager ES Renovations	October 2019	August 2020
Bleyl/Arnold MS Renovations	December 2019	August 2021
Campbell MS Renovations	December 2019	August 2021
Hopper/Kahla/Smith/Salyards MS Renovations	December 2019	August 2021
Transportation (Buses)	November 2019	August 2020
Technology - Instructional Technology		
Elementary School No. 57	November 2020	August 2021
Elementary School No. 58	November 2022	August 2023
Middle School No. 19	November 2019	August 2020
<i>*Phasing Schedule and Project Scope is subject to change based upon critical replacement changes and construction market conditions</i>		



FINANCE

2004 Bond Authorization - \$713,200,000

Bond Sale	Sale Date	Unissued
		\$713,200,000
\$50,359,500	May 2005	662,840,500
200,000,000	March 2006	462,840,500
250,000,000	June 2007	212,840,500
52,000,000	August 2008	160,840,500
125,000,000	August 2009	35,840,500
35,840,500	Nov. 2014	\$0

2007 Bond Authorization - \$807,000,000

Bond Sale	Sale Date	Unissued
		\$807,000,000
\$430,810,000	Pre-2014 (4)	376,190,000
165,000,000	January 2014	211,190,000
121,160,000	Nov. 2014	90,030,000
72,000,000	Nov. 2015	18,030,000
18,030,000	Nov. 2016	\$0
\$430,810,000	Pre-2014 (4)	

2014 Bond Authorization - \$1,209,280,000

Bond Sale	Sale Date	Unissued
		\$1,209,280,000
\$172,999,500	Nov. 2014	1,036,280,500
238,000,000	Nov. 2015	798,280,500
251,970,000	Nov. 2016	\$546,310,500

Tax Rate Assumptions: Bond Maturities – Estimated Useful Life

Bond Maturities

- ▶ Facilities – 25 years
- ▶ Instructional Technology – 5 years
- ▶ Infrastructure Technology – 10 years
- ▶ Buses – 15 years

Debt Service Tax Rate

Year	Projected Tax Rate	Actual Tax Rate
2013-2014	\$0.4100	\$0.4100
2014-2015	\$0.4100	\$0.4100
2015-2016	\$0.4175	\$0.4000
2016-2017	\$0.4375	\$0.4000
2017-2018	\$0.4550	
2018-2019	\$0.4550	
2019-2020	\$0.4539	